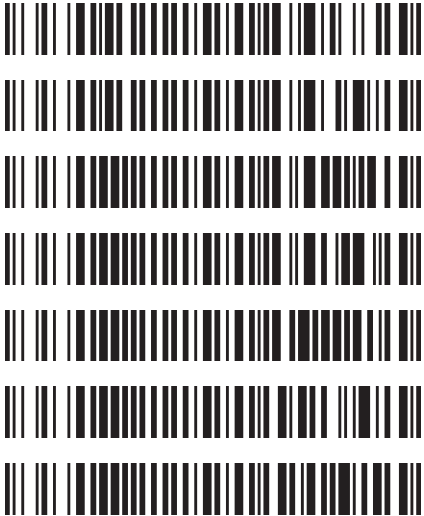


Worklist: 2709

<u>LAB_CASE</u>	<u>ITEM</u>	<u>TASK_ID</u>	<u>DESCRIPTION</u>
M2018-4669	3	127832	AM 3 Urine Carboxy-THC
M2018-4682	4	127833	AM 3 Urine Carboxy-THC
P2018-2670	1	127834	AM 3 Urine Carboxy-THC
P2018-2671	1	127835	AM 3 Urine Carboxy-THC
P2018-2743	1	127836	AM 3 Urine Carboxy-THC
P2018-2757	1	127837	AM 3 Urine Carboxy-THC
P2018-2802	1	127838	AM 3 Urine Carboxy-THC



Area Percent Report

Data Path : I:\Instrument Data\Pocatello\Major Mass Spec\CDS\2018\am 3 worklist 2709\
Data File : THC-PC1.D
Acq On : 27 Sep 2018 14:02
Operator : ISP\Datastor
Sample : Spiked Positive c-THC Control
Misc : c-THC lot # 0497429 in Negative Lot # POC062718; Worklist 2709
ALS Vial : 2 Sample Multiplier: 1

cg

Integration Parameters: events.e
Integrator: ChemStation

Method : C:\gcms\1\methods\TOX.M
Title :

Signal : EIC Ion 371.00 (370.70 to 371.70): THC-PC1.D\data.ms

peak #	R.T. min	first scan	max scan	last scan	PK TY	peak height	corr. area	corr. % max.	% of total
1	6.606	95	112	114	BV	90	1476	2.66%	2.380%
2	6.659	114	130	148	VV	2872	55536	100.00%	89.514%
3	7.101	271	284	310	VV	171	5029	9.06%	8.106%

Sum of corrected areas: 62041
Signal : EIC Ion 473.00 (472.70 to 473.70): THC-PC1.D\data.ms

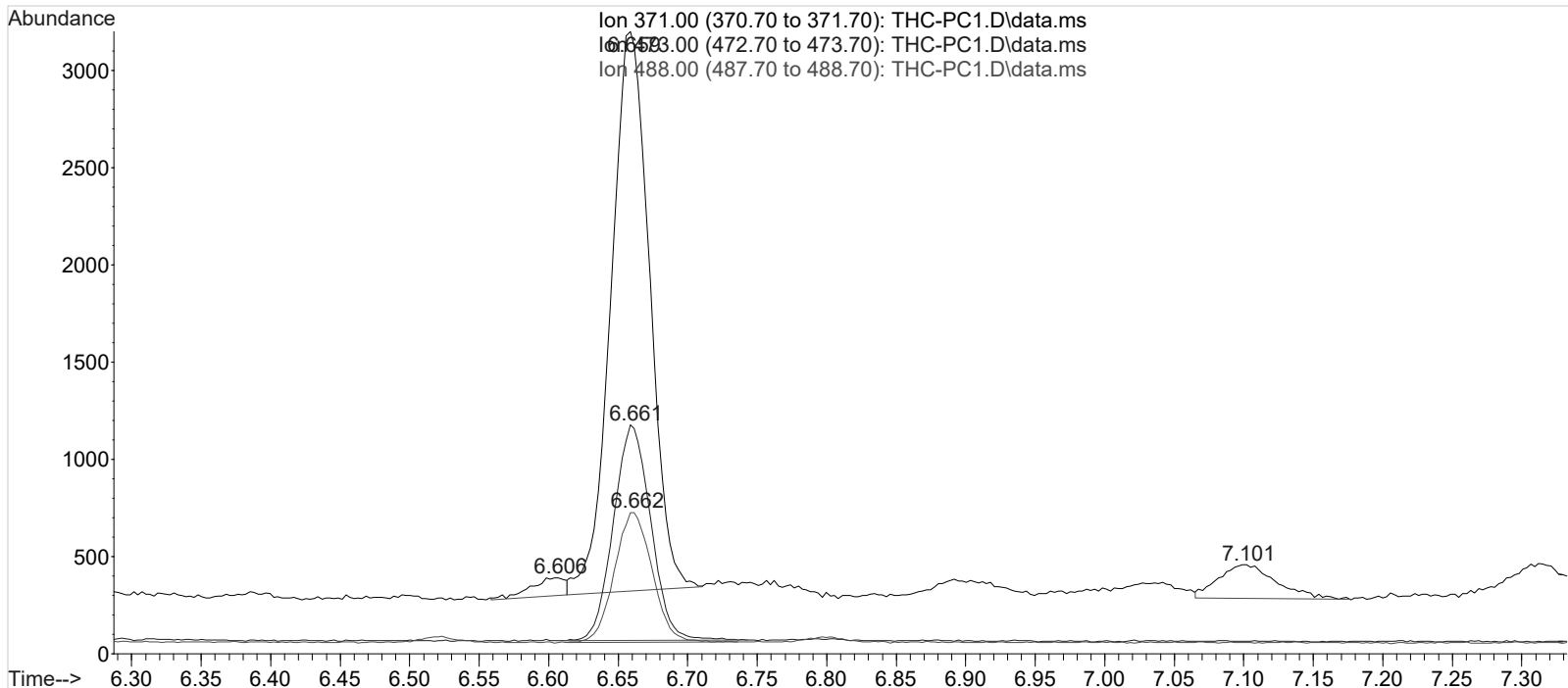
peak #	R.T. min	first scan	max scan	last scan	PK TY	peak height	corr. area	corr. % max.	% of total
1	6.661	114	131	159	BB	1101	20735	100.00%	100.000%

Sum of corrected areas: 20735
Signal : EIC Ion 488.00 (487.70 to 488.70): THC-PC1.D\data.ms

peak #	R.T. min	first scan	max scan	last scan	PK TY	peak height	corr. area	corr. % max.	% of total
1	6.662	114	131	157	BB	667	12616	100.00%	100.000%

Sum of corrected areas: 12616

TOX.M Fri Sep 28 08:09:49 2018



Area Percent Report

cg

Data Path : I:\Instrument Data\Pocatello\Major Mass Spec\CDS\2018\am 3 worklist 2709\
 Data File : THC-PC2.D
 Acq On : 27 Sep 2018 20:50
 Operator : ISP\Datastor
 Sample : Spiked Positive c-THC Control
 Misc : c-THC lot # 0497429 in Negative Lot # POC062718; Worklist 2709
 ALS Vial : 2 Sample Multiplier: 1

Integration Parameters: events.e
 Integrator: ChemStation

Method : C:\gcms\1\methods\TOX.M
 Title :

Signal : EIC Ion 371.00 (370.70 to 371.70): THC-PC2.D\data.ms

peak #	R.T. min	first scan	max scan	last scan	PK TY	peak height	corr. area	corr. % max.	% of total
1	6.658	81	130	149	BV	2863	56004	100.00%	92.011%
2	7.103	271	284	302	VV	154	4351	7.77%	7.149%
3	7.313	333	357	359	PBA	44	511	0.91%	0.840%

Sum of corrected areas: 60867
 Signal : EIC Ion 473.00 (472.70 to 473.70): THC-PC2.D\data.ms

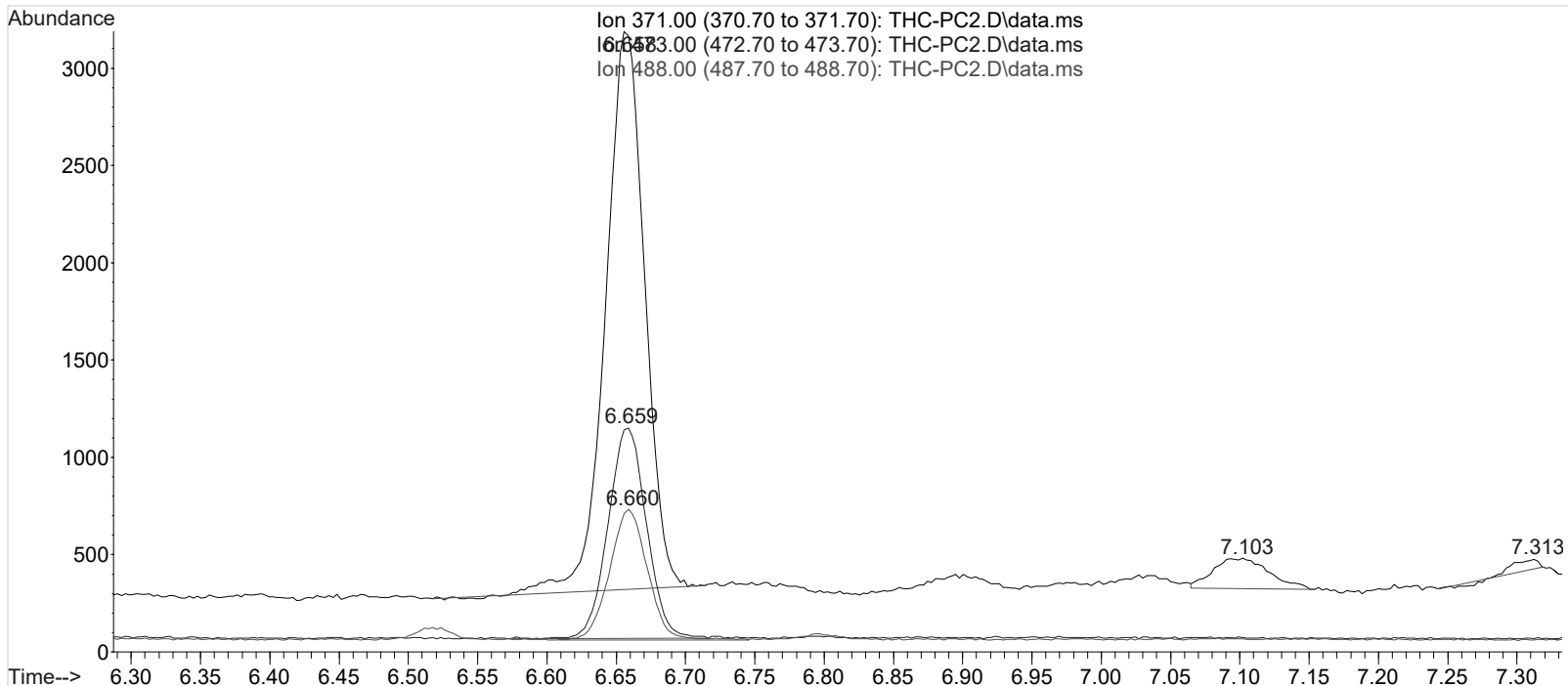
peak #	R.T. min	first scan	max scan	last scan	PK TY	peak height	corr. area	corr. % max.	% of total
1	6.659	100	130	150	BV	1079	20734	100.00%	100.000%

Sum of corrected areas: 20734
 Signal : EIC Ion 488.00 (487.70 to 488.70): THC-PC2.D\data.ms

peak #	R.T. min	first scan	max scan	last scan	PK TY	peak height	corr. area	corr. % max.	% of total
1	6.660	113	130	160	BV	666	12725	100.00%	100.000%

Sum of corrected areas: 12725

TOX.M Fri Sep 28 08:10:30 2018



Area Percent Report

CS

Data Path : I:\Instrument Data\Pocatello\Major Mass Spec\CDS\2018\am 3 worklist 2709\
Data File : THC-NC.D
Acq On : 27 Sep 2018 13:50
Operator : ISP\Datastor
Sample : Negative Control
Misc : Lot # POC062718; AM #3 Worklist 2709
ALS Vial : 1 Sample Multiplier: 1

Integration Parameters: events.e
Integrator: ChemStation

Method : C:\gcms\1\methods\TOX.M
Title :

Signal : EIC Ion 371.00 (370.70 to 371.70): THC-NC.D\data.ms

peak #	R.T. min	first scan	max scan	last scan	PK TY	peak height	corr. area	corr. % max.	% of total
1	7.316	339	358	359	BBA	10	147	100.00%	100.000%

Sum of corrected areas: 147

Signal : EIC Ion 473.00 (472.70 to 473.70): THC-NC.D\data.ms

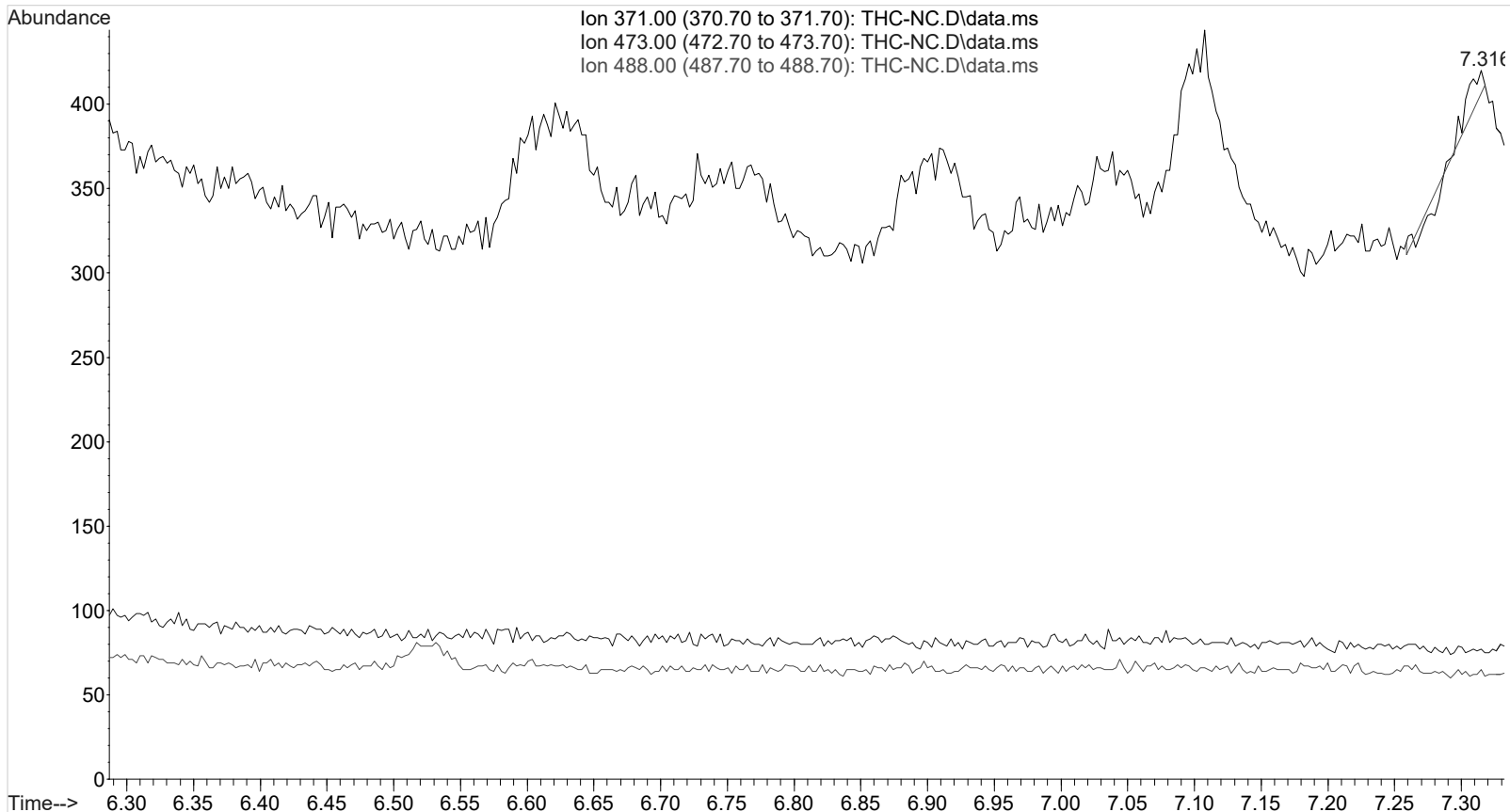
peak #	R.T. min	first scan	max scan	last scan	PK TY	peak height	corr. area	corr. % max.	% of total
No peaks were detected using the method integration parameters!									

No peaks were detected using the method integration parameters!
Signal : EIC Ion 488.00 (487.70 to 488.70): THC-NC.D\data.ms

peak #	R.T. min	first scan	max scan	last scan	PK TY	peak height	corr. area	corr. % max.	% of total
No peaks were detected using the method integration parameters!									

No peaks were detected using the method integration parameters!

TOX.M Fri Sep 28 08:10:53 2018



Area Percent Report

cg

Data Path : I:\Instrument Data\Pocatello\Major Mass Spec\CDS\2018\am 3 worklist 2709\
 Data File : THC-C3-reinject.D
 Acq On : 28 Sep 2018 07:11
 Operator : ISP\Datastor
 Sample : Biorad C3 Control
 Misc : C3 Lot # 68440; Worklist 26709
 ALS Vial : 3 Sample Multiplier: 1

Integration Parameters: events.e
 Integrator: ChemStation

Method : C:\gcms\1\methods\TOX.M
 Title :

Signal : EIC Ion 371.00 (370.70 to 371.70): THC-C3-reinject.D\data.ms

peak #	R.T. min	first scan	max scan	last scan	PK TY	peak height	corr. area	corr. % max.	% of total
1	6.687	125	140	159	VV	1267	24579	100.00%	100.000%

Sum of corrected areas: 24579

Signal : EIC Ion 473.00 (472.70 to 473.70): THC-C3-reinject.D\data.ms

peak #	R.T. min	first scan	max scan	last scan	PK TY	peak height	corr. area	corr. % max.	% of total
1	6.688	119	140	164	BB	475	9150	100.00%	100.000%

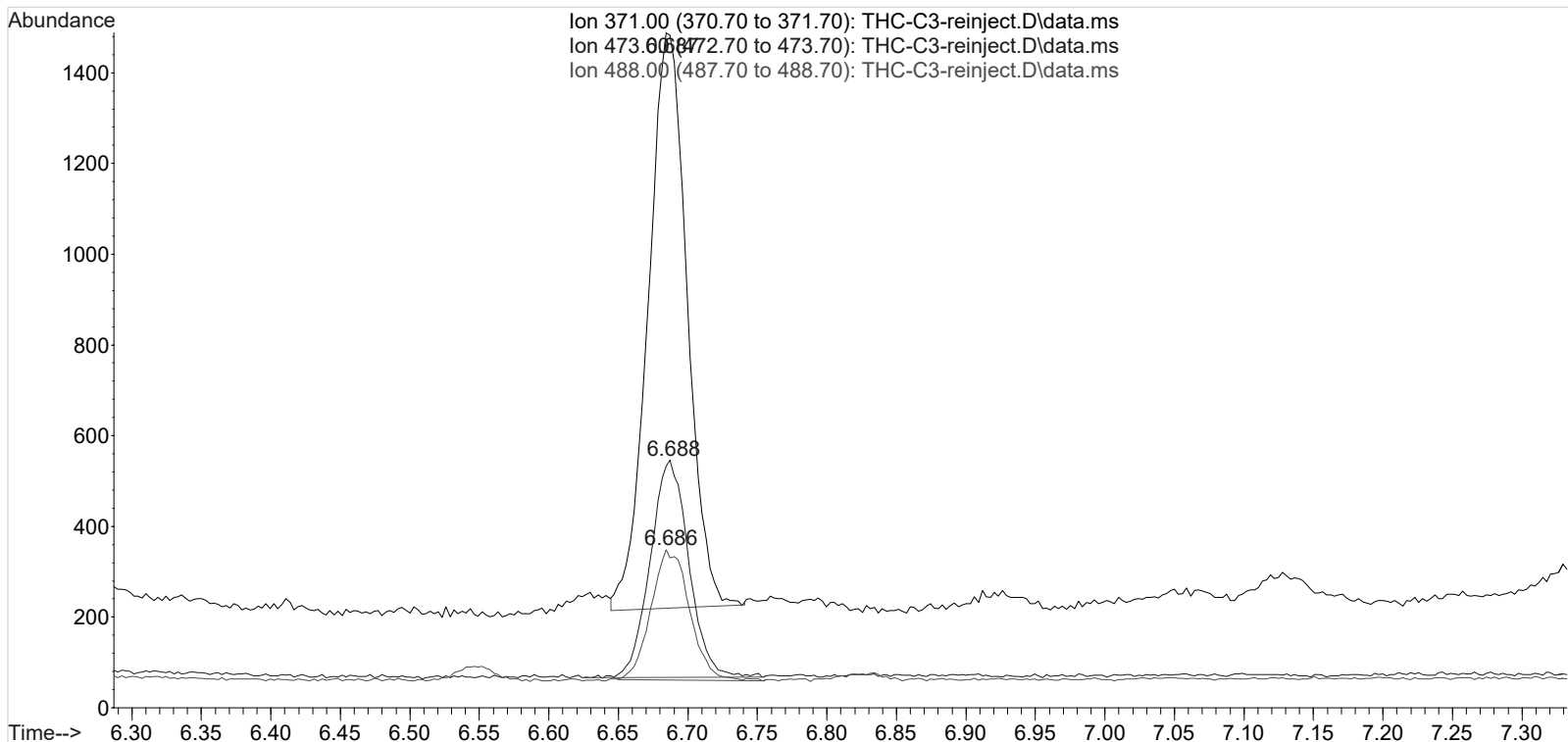
Sum of corrected areas: 9150

Signal : EIC Ion 488.00 (487.70 to 488.70): THC-C3-reinject.D\data.ms

peak #	R.T. min	first scan	max scan	last scan	PK TY	peak height	corr. area	corr. % max.	% of total
1	6.686	127	140	164	BB	283	5479	100.00%	100.000%

Sum of corrected areas: 5479

TOX.M Fri Sep 28 08:11:24 2018



Run Date: 9/27/2018

Worklist #: 2709

Laboratory Case #: BioRad C3 Lot: 68440

Case Calculations:

EIC Ion 371 Corr. Area: 24579

EIC Ion 473 Corr. Area: 9150

EIC Ion 488 Corr. Area: 5479

473:371 Ratio: **0.372**

488:371 Ratio: **0.223**

Quality Control Calculations:

	1st Control	2nd Control
EIC Ion 371 Corr. Area:	55536	56004
EIC Ion 473 Corr. Area:	20735	20734
EIC Ion 488 Corr. Area:	12616	12725
Ratio of 473:371:	0.373	0.370
		Average: 0.372
Ratio of 488:371:	0.227	0.227
		Average: 0.227

Acceptable Retention Time Range: 6.559 to 6.758

Approximate Minimum Corrected Area of 371 Ion: 11107

Acceptable 473:371 Ratio Range: 0.297 to 0.446

Acceptable 488:371 Ratio Range: 0.182 to 0.273